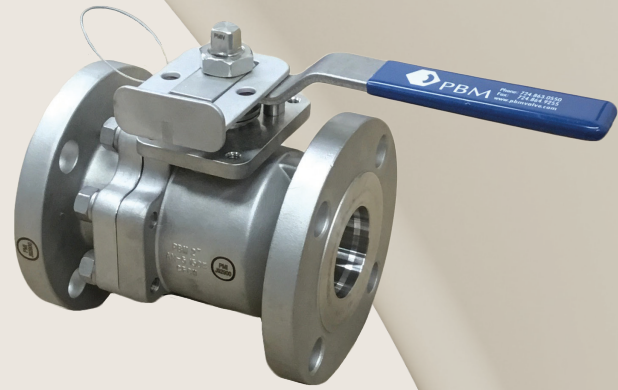




Breakthrough
engineering for
a better world

Process
Automation

IMI PBM



AN Series 6 Sizes 1/2" to 6"

Industrial ANSI API-607 Fire Tested Qualified Valves 150# & 300#

Design Features

- Valves are rated for full vacuum
- Valves have blowout proof stem
- Valves are Non Adjust-O-Seal® and include internal/external grounding
- AN Series ANSI valves have an O-Ring body seal
- Valves are a two piece "split body" design with flanges per ANSI B16.5 and face-to-face dimensions that conform to ASME B16.10 long pattern
- Standard Live Loaded Stem Packing
- Upstream/downstream bubble tight sealing capability allows valve body cleaning, purging and draining (consult factory)
- API 641 option available (consult factory)
- Encapsulated ID seat design - useable for some steam applications
- Valves are ADI free

- Stem assembly accommodates IMI PBM Direct Mount Actuation for accurate alignment and increased cycling life
- Optional purge port, milled ball flats or drain holes in ball allow inline CIP to prevent clogging and plug formation (consult factory)
- Self-Flushing Ball and V-Ball options available
- Valves are 100% tested per ASME/ANSI B16.34
- Valves are designed, assembled and tested at our factory in the U.S.
- V-TEF and S-TEF seats are FDA Compliant and USP Class VI; valves also have graphite seals
- Material Test Report (MTRS) can be provided for wetted components

SPECIFICATIONS

AN SERIES 6 INDUSTRIAL BALL VALVES

Sizes	1/2" - 6" Series 6
Material	316 Stainless Steel, Hastelloy® C-276, Carbon Steel, others
Temperatures	-20°F to 450°F depending on seat and seal material
End Connections	150# and 300# RF Flange
Seats, Seals & Stem Packings	V-TEF™, S-TEF®, C-TEF™ others available
O-Rings	O-Ring Seal (FKM V1274-75/80, EPDM E3609-70, others available)
Body Bolts & Nuts	B16.34 bolting
Maximum Working Pressure	In accordance with B16.34

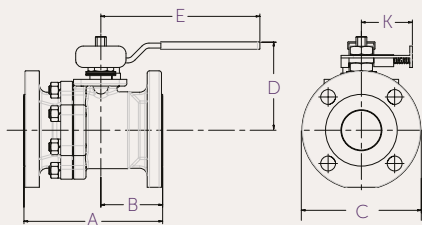
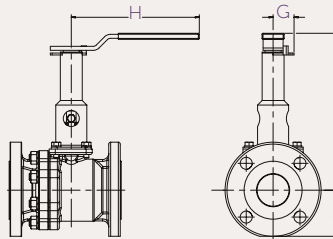
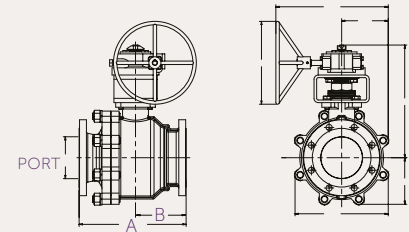
CV Values (gpm)			
Size	Cv (gpm)	Weight 150# Class	Weight 300# Class
1/2"	13	3.55 lbs	4.8 lbs
3/4"	52	6.8 lbs	7.3 lbs
1"	80	8 lbs	11 lbs
1 1/2"	190	16 lbs	23 lbs
2"	400	25 lbs	30 lbs
3"	1,100	50 lbs	71 lbs
4"	2,400	96 lbs	130 lbs
6"	5,600	242 lbs*	CF

PRODUCT (1-2) MATERIAL (3-4)			SIZE (5) SERIES (6)			END CONNECTION (7-8)		SEAT / SEAL (9)		PURGE PORT BALL OPTIONS (10-11)		BALL / STEM OPTIONS (12)		OPERATOR (13- 14)		POLISH OPTIONS (15)	
AN	H-	Cast 316/ 316L S/S	C	1/2"	6	L-	150# RF Flange	G	V-TEF™ Seats / Graphite Seals FKM O-Ring	--	No Purge Port or Ball Option	-	Standard Ball and Stem	--	W/ Standard Lever Handle	-	125 Ra ID Standard
	E-	Carbon Steel	D	3/4"		M-	300# RF Flange	J	V-TEF™ Seats / Graphite Seals / VTFE Cav Fill / FKM O-Ring	- 8	Self Flushing Ball	G	17-4PH Stem	02	W/O Handle W/ Stem Actuator Prep	A	20 Ra ID
	C-	Hastelloy C-276	E	1"				Z	V-TEF™ Seats / Graphite Seals EPDM O-Ring	- V	Slotted V-Ball			04	Locking Lever Handle	C	20 Ra ID / 32 Ra OD
	Y-	Hastelloy C-22	G	1-1/2"				2	V-TEF™ Seats / Graphite Seals / VTFE Cav Fill / EPDM O-Ring	- W	30° V-Ball			08	Gear Operator (Req'd for 6")	F	20 Ra ID after Electro Polish
			H	2"						- X	45° V-Ball			16	Extended Stem w/Lockable Handle (1/2" thru 4")		
			K	3"						- Y	60° V-Ball			20	DA 80psig actuator		
			L	4"										27	DA 60psig actuator		
		M	6"										34	SR 80psig actuator			
								H	S-TEF® Seats / Graphite Seals / FKM O-Ring	Other Purge Port & Ball Options - Contact IMI PBM				41	SR 60psig actuator		
								0	S-TEF® Seats / Graphite Seals / EPDM O-Ring	Other Seat/seal options available - Contact IMI PBM							
								9	V-TEF™ Seats / Seals FEP Encaps. FKM O-Rings								

Other material options available - Contact IMI PBM

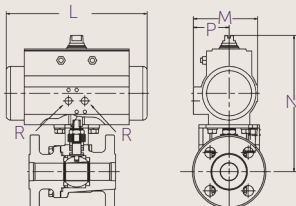
More polish available - Contact IMI PBM

Other operator options available - Contact IMI PBM

ANSI VALVE - LOCKING HANDLE

ANSI VALVE - EXTENDED STEM W/LOCKING HANDLE

**ANSI VALVE - GEAR OPERATOR
LOCKING HANDLE [6" ONLY]**


Valve Size	Size Code	Port Dia	A		B		C		D	E	J		Ext. Locking Handle			Locking Handle			
			Overall Length		CL to End		Flange Diameter				CL to top of Handle	Handle Length from CL	CL to Bottom		F	G	H	K	Hole Dia. for Lock
			150#	300#	150#	300#	150#	300#					150#	300#					
1/2"	C	0.50	4.25	5.50	1.85	2.52	3.50	3.75	2.66	4.15	1.62	1.75	5.12	0.95	5.09	1.62	.25		
3/4"	D	0.75	4.62	6.00	2.12	2.90	3.88	4.62	2.78	4.15	1.80	2.15	5.27	0.95	5.09	1.62	.25		
1"	E	1.00	5.00	6.50	2.25	3.15	4.25	4.88	3.09	5.09	2.06	2.38	5.61	0.10	5.09	2.08	.28		
1 1/2"	G	1.50	6.50	7.50	2.68	3.18	5.00	6.12	4.16	8.03	2.38	3.00	6.40	1.25	8.03	2.58	.38		
2"	H	2.00	7.00	8.50	3.12	3.84	6.00	6.50	4.46	8.03	2.88	3.12	6.71	1.25	8.03	2.58	.38		
3"	K	3.00	8.00	11.12	3.57	5.19	7.50	8.25	6.85	12.06	3.50	4.00	8.63	1.62	12.06	3.47	.38		
4"	L	4.00	9.00	12.00	3.84	5.34	9.00	10.00	9.00	24.06	4.38	4.75	9.90	2.25	24.06	NA	NA		
6"	M	6.00	15.50	15.88	7.33	7.70	11.00	12.50	NA	NA	6.75	7.72	NA	NA	NA	NA	NA		

	80 PSI Double Acting					60 PSI Double Acting					80 PSI Spring Return					60 PSI Spring Return				
Size	L	M	N	P	R	L	M	N	P	R	L	M	N	P	R	L	M	N	P	R
1/2"	5.55	2.80	5.84	1.61	1/8	5.55	2.80	5.84	1.61	1/8	5.55	2.80	5.84	1.61	1/8	6.46	3.17	6.29	1.77	1/8
3/4"	5.55	2.80	5.99	1.61	1/8	5.55	2.80	5.99	1.61	1/8	6.46	3.17	6.44	1.77	1/8	6.46	3.17	6.44	1.77	1/8
1"	5.55	2.80	6.71	1.61	1/8	5.55	2.80	6.71	1.61	1/8	8.27	3.72	7.87	2.07	1/8	8.27	3.72	7.87	2.07	1/8
1-1/2"	6.46	3.17	8.44	1.77	1/8	8.27	3.72	9.15	2.07	1/8	10.83	4.84	10.20	2.68	1/4	10.83	4.84	10.20	2.68	1/4
2"	8.27	3.72	9.45	2.07	1/8	8.27	3.72	9.45	2.07	1/8	10.83	4.84	10.50	2.68	1/4	13.11	5.39	11.86	2.87	1/4
3"	13.11	5.39	13.81	2.87	1/4	13.11	5.39	13.81	2.87	1/4	14.65	5.83	14.29	3.15	1/4	17.13	6.46	15.18	3.44	1/4
4"	17.13	6.46	17.34	3.44	1/4	17.13	6.46	17.34	3.44	1/4	19.69	7.32	18.28	3.90	1/4	19.69	7.32	18.28	3.90	1/4
6"	22.78	8.54	24.13	4.29	1/4	22.78	8.54	24.13	4.29	1/4	22.78	8.54	24.13	4.29	1/4	26.46	11.42	28.89	5.71	1/4


ACTUATED DIMENSIONS

Unit of measure = inches

Dimensions based on actuators used with V-TEF® seats

 Find out more pbmvalve.com
